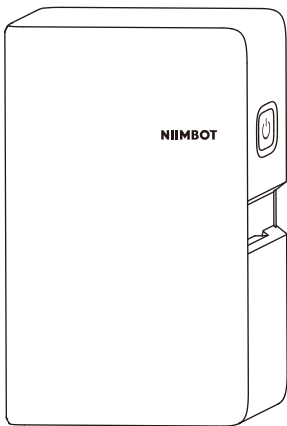


NIIMBOT

Product Manual

Smart Label Printer



NIIMBOT N1

01

Package Contents



Smart Label Printer *1



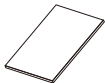
USB Type-C Cable *1



Label Paper Roll *1



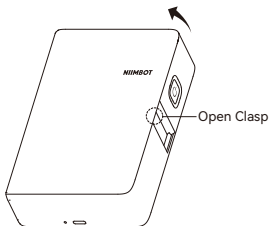
Thermal Transfer Ribbon *1



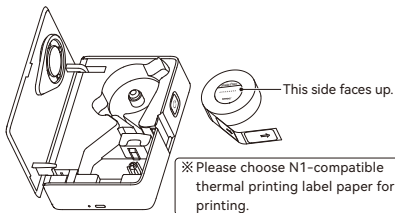
Product Manual *1

02

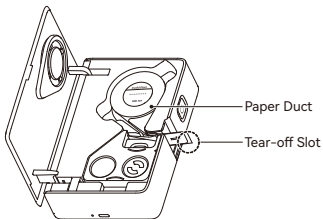
Installation



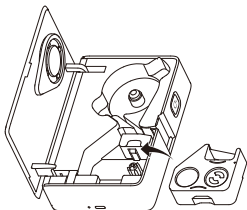
- 1 Lift the open clasp upward to open the compartment.



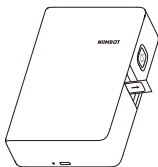
- 2 Fit the label paper inside with the label side facing up.



- 3 Thread the paper roll through the paper duct and make sure the first label paper sticks out of the tear-off slot.



- 4 Tauten the thermal transfer ribbon counterclockwise according to the thermal transfer ribbon label and fit it into the compartment with the label side facing down.



- 5 Snap the clasp down to close the cover.

03

Printer Software

03-1 Recommended App Downloads

NIIMBOT APP

Commercial Label Editing Expert

If you have purchased this product primarily for commercial or industrial applications, we recommend downloading the NIIMBOT app, which features a wide range of industry-specific label templates, data import capabilities, and batch printing functions.

You can download the app directly from the Google Play or Apple App Store.



NIIMBOT
Design & Print APP
easy to download and use



NIIM APP

Your Home Labeling Assistant

If you have purchased this product mainly for home storage or personal creative projects, we recommend downloading and using the NIIM app, which features a variety of fun and creative icons and label templates for household use.

You can download the app directly from the Google Play or Apple App Store.



NIIM
Design & Print APP
easy to download and use



04

Connecting to Print

- 1 Once the app has downloaded, make sure your phone's Bluetooth is turned on.
※ Note: Location permissions may need to be enabled on Android phones.



Turn on Bluetooth 

- 2 Open the app and search for Bluetooth devices to connect to.
※ Note: If it asks for a PIN, enter 0000 or 1234 then press OK.
- 3 Once successfully connected, go to the Drawing Board.

Note

The illustrations of products, accessories, software interfaces, etc. in this getting started guide are illustrative in nature and for reference only. Due to product updates and upgrades, the physical product may differ slightly from the illustrations. Please refer to the actual physical product in such case. The product is subject to technical improvements without notice.

05

Operation Steps

Function	Process
Turn on	Press and hold the power button for three seconds
Turn off	Press and hold the power button for three seconds while powered on
Feed paper or print history	Press the power button once while powered on
Print testing page	Press the power button twice while powered on

06

Meaning of Indicator Lights

Indicator light	State	Meaning
Blue	Flashing slowly	Standby
Blue	Flashing quickly	Charging
Blue	Solid	Bluetooth connected
Red	Flashing slowly	Low battery—standby
Red	Flashing quickly	Low battery—charging
Red	Solid	Low battery and Bluetooth connected

07

Specifications

Product	Label Printer	Model	NIIMBOT N1
Dimensions	135*90*37mm	Weight	308g
Charging Time	3 - 4 hours	Input	5V DC, 1A
Battery Capacity	1200mAh	Printing Method	Thermal Transfer Printing
Printing Resolution	203dpi	Printing Width	12mm
Connectivity	Bluetooth	Charge	Type-C
Transmit Power	4dBm(Maximum)	Operating Temperature	0°C - 40°C

08

Safety Precautions

Read all instructions and warnings in this guide carefully before using the product to ensure proper and safe use of the product and to avoid personal injury or damage to property.

*Warning



Do not disassemble the product yourself
No returns or exchanges will be authorized for disassembled products.



Do not use corrosive chemical products or cleaners to wipe down the product.



Do not use the product in the vicinity of flammable substances such as in gas stations, fuel depots, etc.

1. Keep the product and accessories in a safe place that is inaccessible to children, or only allow use under the supervision of a guardian.
2. Immediately disconnect the product from the power source if the product enters water.
3. Immediately disconnect the product if the device malfunctions.
4. If you use a power adapter to charge (or power) the device, you must purchase an adapter that is safe, compliant, and meets the standards.
5. Do not disassemble the product to replace the battery yourself. Incorrectly replacing the battery can result in an explosion.

6. The battery contains special protective circuitry and devices. Do not disassemble the battery as this may cause short circuits or electrolyte leakage. If electrolytes accidentally enter your eye, rinse immediately with clean water and seek medical advice.
7. Do not expose the appliance or power adapter to high-temperature or high-humidity environments, or put in water, to prevent short circuits that can cause the battery to become hot, smoke, deform, get damaged or even explode.
8. Disconnect the power adapter immediately if you notice either smoke or a smell coming from the product or the power adapter, taking care to avoid burns.

***Important**

Please purchase the version of the product that matches your region or country of use through the NIIMBOT official store or a NIIMBOT authorized sales agent. Purchasing the product through other channels may mean you buy a pirated product or a product not adapted to your region or country of use which may lead to usage issues. In such cases, NIIMBOT may be unable to provide you with further assistance.

Notice: If the device cannot be turned on, please charge for one hour.

Wuhan Jingchen Intelligent Identification Technology Co., Ltd.

Support Email : service@niimbot.com

Official Website : www.niimbot.com

Manufacturer's Address : No. 5, Creative Workshop, Creative World, Yezhihu West Road, Hongshan District, Wuhan, China

© 2024 NIIMBOT. All Rights Reserved.

NIIMBOT is a brand under Wuhan Jingchen Intelligent Identification Technology Ltd.